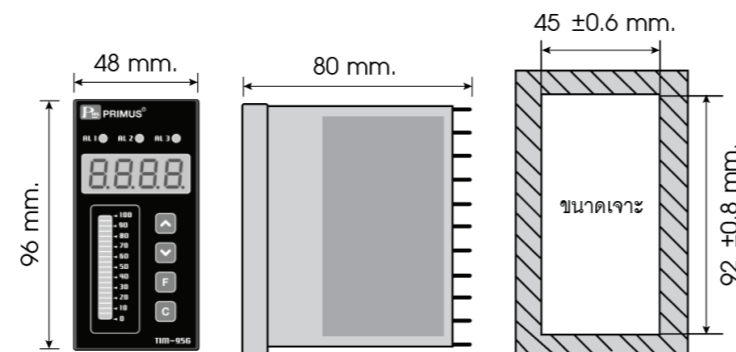




### TECHNICAL SPECIFICATION

Power Supply	100-250VAC 50/60 Hz
Power Consumption	3VA
Display	7 Segment, 4 Digit, Size 0.39 Inch
	LED Bar Graph
	3 LED (Show Alarm Output)
Input	Thermocouple Type K, J, R, T, N, S, E
	RTD Type PT100
	Voltage 0-100mV, 0-10VDC
	Current 4-20mA
	Range Please see detail in Table 1.
	Accuracy $\pm 0.25\%$ of Full Scale @ Room Temp. (25°C)
Communication	Sampling Time 500 mSec
	Protocol MODBUS RTU
	Baud Rate 1200, 2400, 4800, 9600, 19200, 57600 bps
	Parity None
	Stop Bits 1
	Data Bits 8 Bits
Output	Support Device Node 127
	Relay Alarm 3 Alarm 3A/250VAC
	Transfer Output 4-20mA and 0-10VDC
	Output Impedance Load 500Ω for 4-20mA Output Load 1kΩ for 0-10VDC Output
Ambient Operation	Temperature -10°C to 60°C
	Humidity 85 % RH Non-Condensing
Ambient Storage	Temperature -20°C to 80°C
	Humidity 85 % RH Non-Condensing
Protection Degree	Front Protection Rating IP52
	Case Protection Rating IP30
Installation	Panel Mounting
Material	ABS-V0
Size	96 x 48 x 80 mm.
Weight	240 g.

### DIMENSION



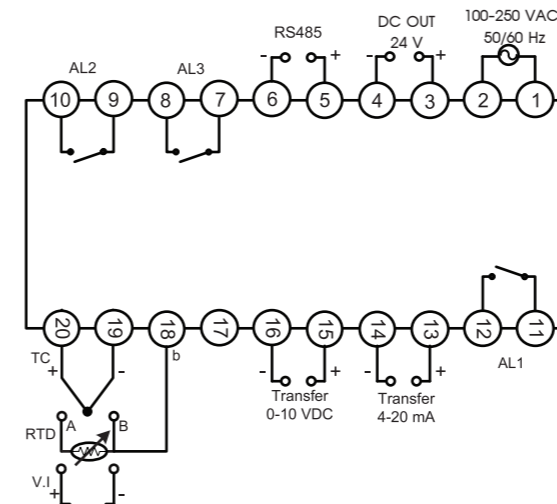
### DESCRIPTION

- Temperature measure and display device
- Receive Thermocouple, 0-100mV, PT100, 4-20mA, 0-10VDC
- Display by 7-segment 4 digits and Bargraph 21 Led
- Communicate via RS485 Protocol Modbus RTU

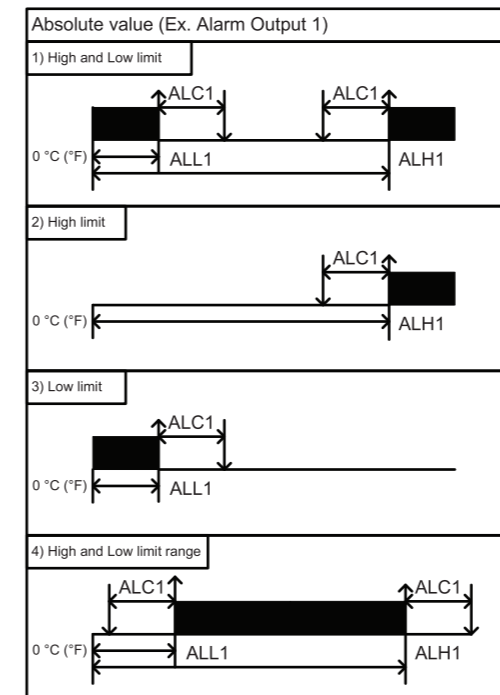
Table 1. Select input sensors and setting range.

Symbol	Input Type	Setting Range/Display Range	
		Non-decimal point	Decimal point
00	Thermocouple Type K	-200~1372 °C	-199.9~999.9 °C
		-328~2501 °F	-199.9~999.9 °F
01	Thermocouple Type J	-200~1200 °C	-199.9~999.9 °C
		-328~2192 °F	-199.9~999.9 °F
02	Thermocouple Type R	-0~1768 °C	-
		-32~3214 °F	-
03	Thermocouple Type T	-200~400 °C	-199.9~400.0 °C
		-328~752 °F	-199.9~752.0 °F
04	Thermocouple Type N	-200~1300 °C	-0~999.9 °C
		-328~2372 °F	-32.0~999.9 °F
05	Thermocouple Type S	-0~1768 °C	-
		-32~3214 °F	-
06	Thermocouple Type E	-200~1000 °C	-199.9~999.9 °C
		-328~1832 °F	-199.9~999.9 °F
07	DC 0-100mV	-1999~9999 °C/°F	-19.99~99.99 °C/°F
			-199.9~999.9 °C/°F
08	PT100	-200~850 °C	-200.0~850.0
		-328~1526 °F	-328.0~1526.0 °C
11	DC 4-20mA	-1999~9999 °C/°F	-199.9~999.9 °C/°F
			-19.99~99.99 °C/°F
			-199.9~999.9 °C/°F
12	DC 0-10VDC	-1999~9999 °C/°F	-199.9~999.9 °C/°F
			-19.99~99.99 °C/°F
			-199.9~999.9 °C/°F

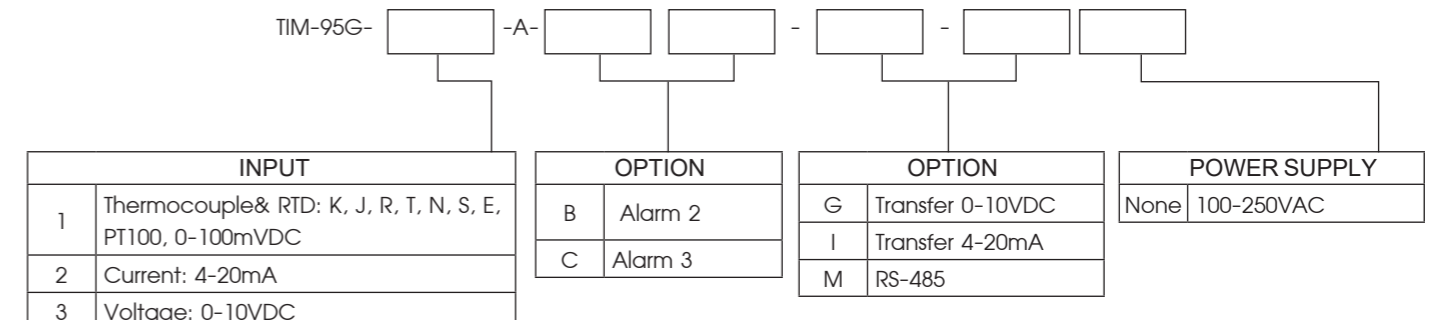
### WIRING DIAGRAM



### Alarm function



### ORDERING CODE


**TIM-95G**
**บริษัท ไพรมัส จำกัด**

119 ซ.สีม่วงอนุสรณ์ ถ.สุทธิสารวินิจฉัย แขวงดินแดง  
เขตดินแดง กรุงเทพฯ 10400  
โทร 0-2693-7005, 0-2277-8027 แฟกซ์ 0-2277-3565  
E-mail : sales@primusthai.com

