



PR-03-S

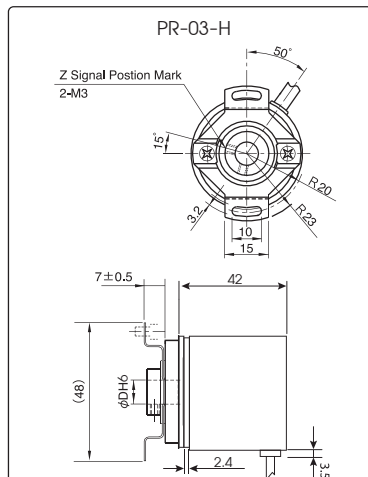
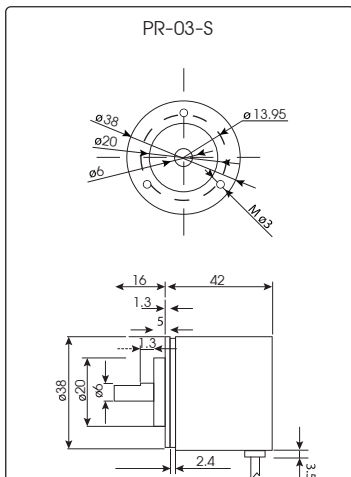


PR-03-H

TECHNICAL SPECIFICATION

Power Supply	Push-Pull	8-27 VDC
	Line Driver	5 VDC
Power consumption	Max 42.5 mA	
Pulse/Round	25 - 2048 Puls/Round	
Output Wave Form	2- Phase+Index Position A, B, Z and \bar{A} , \bar{B} , \bar{Z}	
	Duty Ratio 50 %	
Rise/Fall Time	100 ns.	
Max Frequency Responce	200 kHz	
Max Speed	20,000 RPM	
Ambient operation	Temperature	-10 °C to 70 °C
	Humidity	85 % RH Non-Condensing
Ambient storage	Temperature	-30 °C to 85 °C
	Humidity	85 % RH Non-Condensing
Protection Degree	IP50	
Vibration	10-55 Hz	
Direction of Rotation	Positive Direction/ Negative Direction	
Housing Diameter	38 mm.	
Shaft Diameter	6 mm.	
Cable	50 cm. Shield Cable	
Material	Cover	Steel
	Encoder	Aluminium
	Shaft	Stainless
Weight	127 g.	

DIMENSION



DESCRIPTION

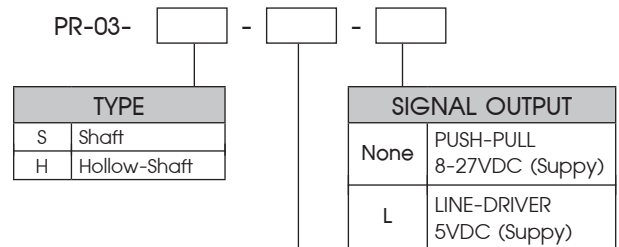
- Device will convert the rotation of axle of Encoder to Pulse signal, compact size 38 mm.
- Separate to be number Pulse/round
- Can choose number Pulse/round since 25-2048 Pulse/round.
- Push-Pull output made it can use instead NPN PNP Open Collector and Line-Driver.
- Push-Pull (A,B,Z) output and Line-Driver (A, \bar{A} , B, \bar{B} , Z, \bar{Z})
- Power supply 8-30 VDC (Push-Pull) and 5 VDC (Line-Driver)

OPERATION

Join shaft of Encoder PR-03 to motor axle or the product that needs to measure. When shaft PR-03 turn follow motor will send Pulse signal as Pulse/Round of these model such as PR-03-S-100 divide 1 round into 100 parts while shaft is turning it will send a signal along the rotating part Signal A and Signal B will Lead/Lag have 90° degree in electrical way. When it turns clockwise A will lead B but if it turns counterclockwise B will lead that has benefit to check turning direction of encoder. Signal Z will have 1 Pulse/round to notice when it turns complete one round.

But Line-Driver model will have signal 6 signals are A, \bar{A} , B, \bar{B} , Z, \bar{Z} by \bar{A} will invert to A, \bar{B} will invert to B and \bar{Z} will invert to Z as signal operation graph.

ORDERING CODE



Resolution	
25	25 P/R
50	50 P/R
100	100 P/R
128	128 P/R
200	200 P/R
256	256 P/R
400	400 P/R
500	500 P/R
512	512 P/R
1024	1024 P/R
2048	2048 P/R

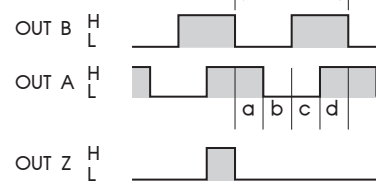
Accessories Coupling Order
PR-02-06

*** Remark : Coupling
use with PR-03-S

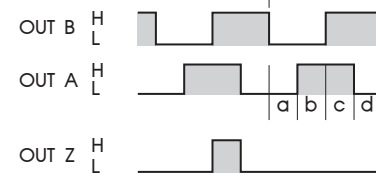
Signal operation graph

PR-03-S
Push-Pull

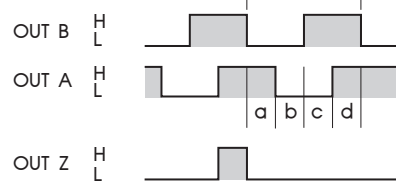
Positive Direction



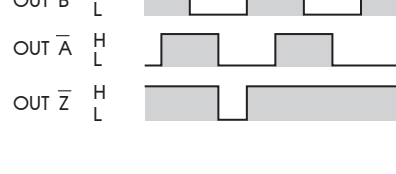
Positive Direction


PR-03-S-L
Line Driver

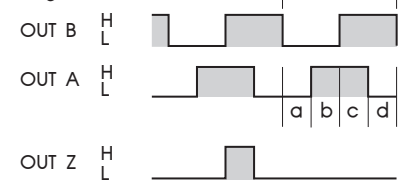
Positive Direction



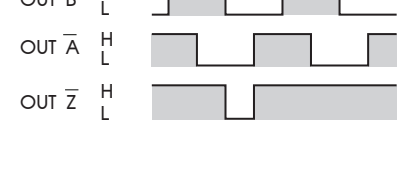
Positive Direction



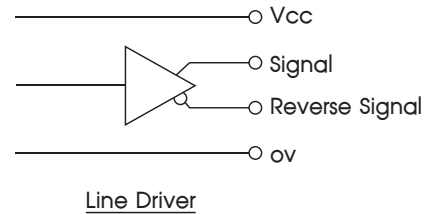
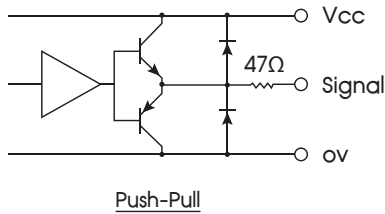
Negative Direction



Negative Direction



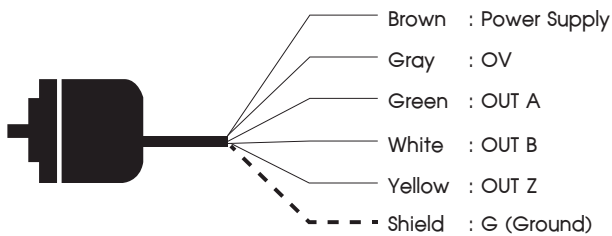
CIRCUIT OF OUTPUT SIGNAL



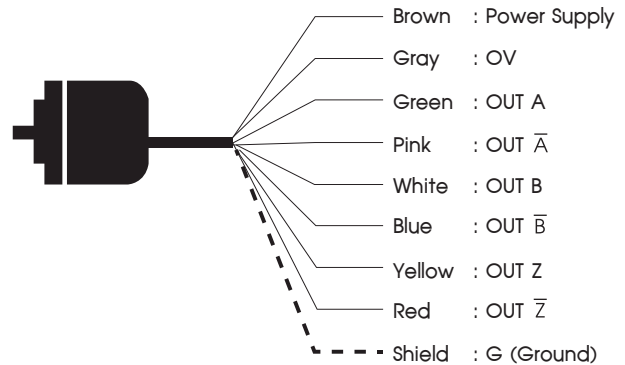
WIRING DIAGRAM

Push-Pull

The Shielded Wire is Connected to the main body.


Line Driver

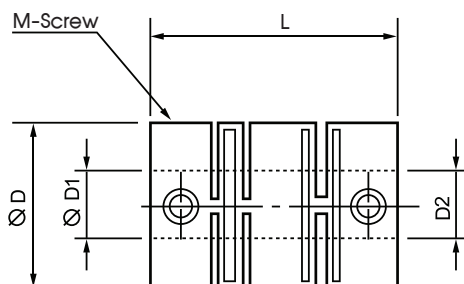
The Shielded Wire is Connected to the main body.



ACCESSORIES

PR-02-06
COUPLING for PR-03-S


- For PR-03-S
- is connector for encoder to connect with load or motor.

Size and dimension


Model	D1/D2	L	D	Torque	Angular	Material
PR-02-06	6/6 mm.	25 mm.	22 mm.	2 N.m.	5 องศา	Polyester Resin

บริษัท ไพรมัส จำกัด
 119 ซ.สีม่วงอนุสรณ์ ถ.สุทธิสารวินิจฉัย แขวงดินแดง เขตดินแดง กรุงเทพฯ 10400
 โทร 0-2693-7005, 0-2277-8027 แฟกซ์ 0-2277-3565
 E-mail : sales@primusthai.com