



PR-01N-S



PR-01N-H

## DESCRIPTION

- It is a device to convert the axis of the shaft of the Encoder into an electrical pulse.
- divided by number of pulse
- Number of Pulse / Cycle can be selected from 25 - 2048 Pulse
- Push-Pull output can be used for both NPN, PNP Open Collector and Line - Driver.
- Push-Pull output signal (A, B, Z) and Line-Driver (A, B, B, Z, Z)
- Power supply 8 - 30 VDC (Push-Pull) and 5 VDC (Line-Driver)

## TECHNICAL SPECIFICATION

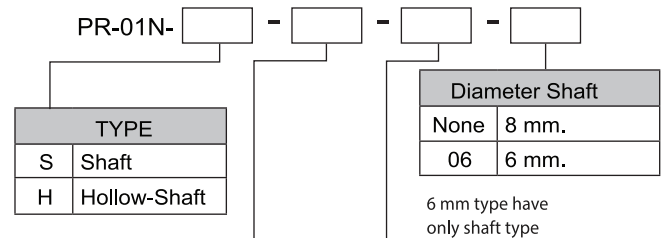
Power supply	Push-Pull	8-30 VDC
	Line driver	5 VDC
Power consumption	Max 42.5 mA	
Pulse/Round	25 - 2048 Pulse/Round	
Output wave from	2- Phase+Index position A, B, Z and $\bar{A}$ , $\bar{B}$ , Z	
	Duty Ratio 50 %	
Rise/Fall time	100 ns.	
Max frequency response	200 kHz	
Max speed	20,000 RPM	
Ambient operation	Temperature	-10 °C to 60 °C
	Humidity	80 % RH Non-Condensing
Ambient storage	Temperature	-30 °C to 85 °C
	Humidity	80 % RH Non-Condensing
Protection degree	IP54	
Direction of rotation	Positive direction/Negative direction	
Housing diameter	50 mm.	
Shaft diameter	8 mm.	
Cable	50 cm. Shield cable	
Material	Cover	Steel
	Encoder	Aluminium
	Shaft	Stainless
Weight	215 g.	

## OPERATION

Connect the shaft of the Encoder PR - 01N to the motor shaft or workpiece to measure. When the PR - 01N shaft rotates according to the motor, it sends a pulse signal according to the pulse per round of the model PR - 01N - S - 100 will be divided into 100 parts per 1 round. As the shaft moves, it sends the pulse out of the rotating parts. Signal A and Signal B Lead / Lag angle 90 degrees by the electric clockwise rotation A will lead B, but if turn counterclockwise B will be ahead of A, which will be useful to check the direction. The Signal Z will have 1 Pulse to inform you of the anniversary

If the line - driver output signal is 6 Signal is A, A, B, B, Z, Z by A will invert with A, B will invert with B and Z will invert with Z displayed by Signal Graph

## ORDERING CODE



PULSE	
25	25 Pulse/ Round
50	50 Pulse/ Round
100	100 Pulse/ Round
128	128 Pulse/ Round
200	200 Pulse/ Round
256	256 Pulse/ Round
400	400 Pulse/ Round
500	500 Pulse/ Round
512	512 Pulse/ Round
1024	1024 Pulse/ Round
2048	2048 Pulse/ Round

SIGNAL OUTPUT	
None	PUSH-PULL 8-30VDC (Supply)
L	LINE-DRIVER 5VDC (Supply)

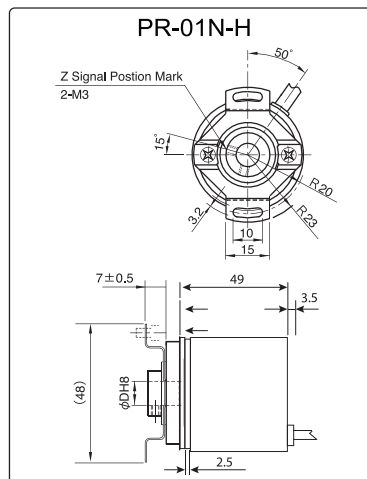
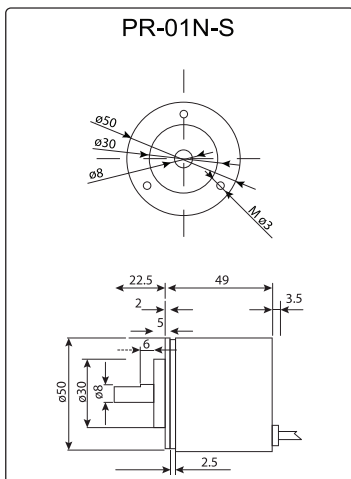
Accessories Coupling

Model	
PR-02-06	6 mm.
PR-02-08	8 mm.

PR-02-08

\*\*\* Remark: Coupling is used with PR-01N-S only

## DIMENSION

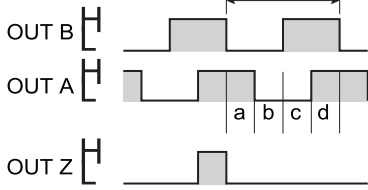


### SIGNAL OPERATION GRAPH

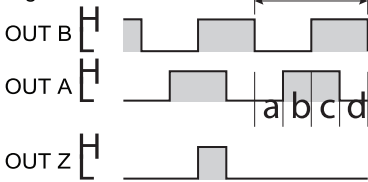
PR-01N-S

Push-Pull

Positive Direction



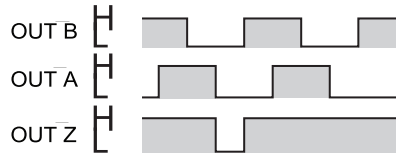
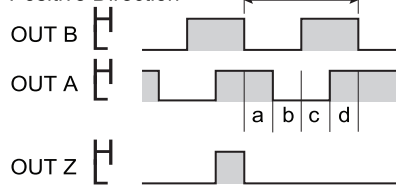
Negative Direction



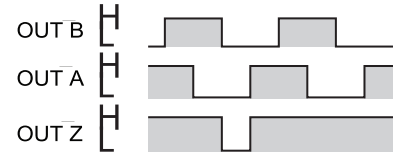
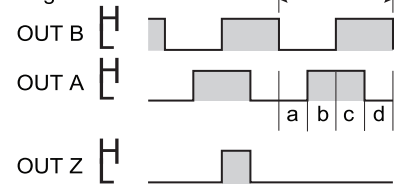
PR-01N-S-L

Line Driver

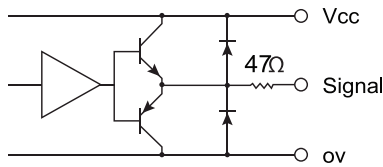
Positive Direction



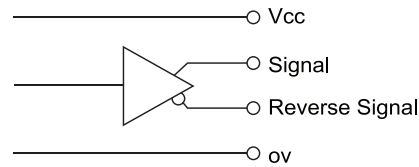
Negative Direction



### CIRCUIT OF OUTPUT SIGNAL



Push-Pull

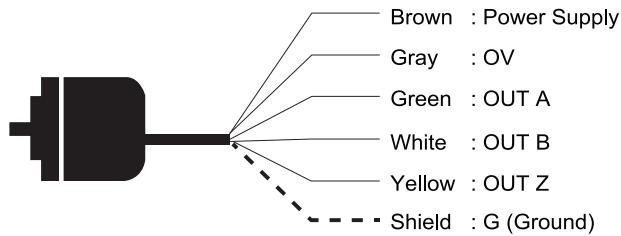


Line Driver

### WIRING DIAGRAM

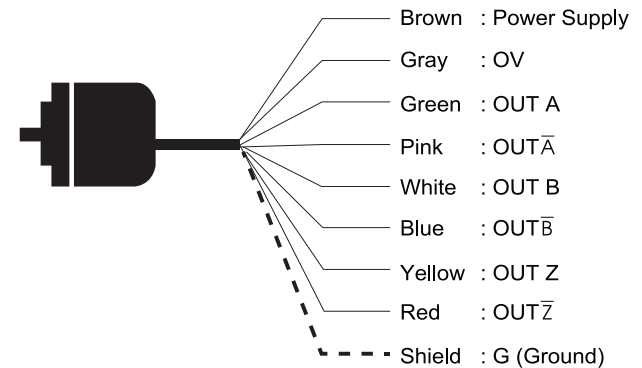
Push-Pull

The Shielded Wire is Connected to the main body.



Line Driver

The Shielded Wire is Connected to the main body.



### ACCESSORIES

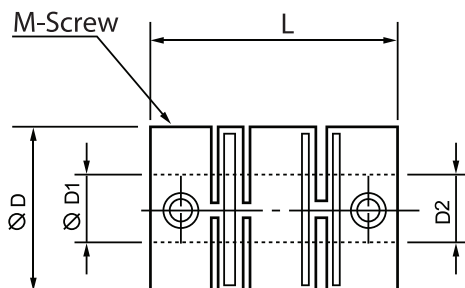
PR-02N-08

COUPLING for PR-01N-S



- For PR-01N-S
- It is a connector for welding the Encoder to Load or Motor.

DIMENSION



Model	D1/D2	L	D	Torque	Angular	Material
PR-02N-08	8/8 mm.	25 mm.	22 mm.	2 N.m.	5 degree	Polyester Resin

บริษัท ไพรมัส จำกัด  
119 ซ.สีม่วงอนุสรณ์ ถ.สุทธิสารวินิจฉัย แขวงดินแดง  
เขตดินแดง กรุงเทพฯ 10400  
โทร 0-2693-7005, 0-2277-8027 แฟกซ์ 0-2277-3565  
E-mail : sales@primusthai.com