



## DESCRIPTION

- Display by 7 Segment Red Color Size 0.4 inch 4 digits.
- Screw Terminal at back side.
- Wiring Diagram on the top side of device.
- The front has sealed perfectly. It can protect dust and water.
- LED show display function in RPM or Line Speed.

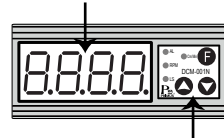
## DESCRIPTION

DCM-001N is the tachometer to measure round and distance in Digital. It shows by 7-Segment Red color size 0.4 inch 4 digits. Clear vision with microcontroller It can set Time base by automatically in frequency range 0-2,400 RPM and can set Time base by itself in frequency range more than 2,400 RPM so it make the device can response quickly in both high and low speed. It uses to display round speed of motor, Conveyor, Machine, and show result as distance per minute.

DCM-001N will have display function 2 type which can program the several pulse in 1 round so it make measuring accurately and respond quick in slow round. The unit of measurement is round/minute and Line speed which can set to centimetres and metre per minute as require by buttons.

### Front side and functions of keypads.

Display in Digital Number



LED : ALARM (AL) will ON when relay operate.

LED : RPM will show when the device display as round per minute is RPM function.

LED : LS will show when the device display as distance per minute is Line Speed function.

LED : Cm/Min will show when the device display as centimeter per minute.

Button for enter to menu.

Button for increase value.

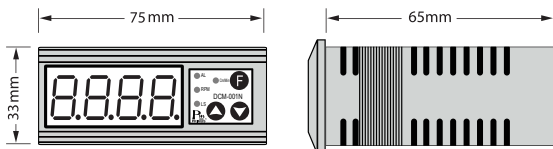
Button for decrease value and change display unit between centimeter per minute and meter per minute in Line Speed function.

## TECHNICAL SPECIFICATION

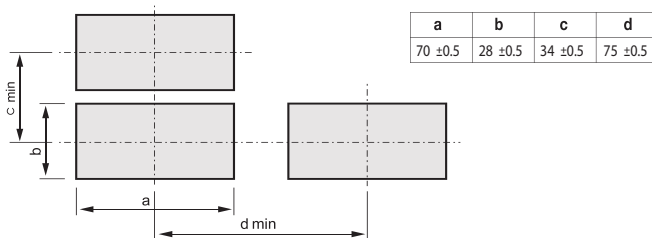
Power Supply	220 VAC ±15% 50/60Hz, 15-30VDC
Power consumption	2.5 VA
Display	7-Segment, Size 0.4 Inch, 4 Digit
Input	DC Source : 15 VDC
	Photo Switch : NPN, PNP
	Proximity : NPN, PNP
	Range : 6-9999 (RPM & Line Speed)
	Setting Pulse : 1-999 1 Cycle (RPM)
	Cm/Min : 1-9999 cm
Output	Alarm : 1 Alarm (3A/250 VAC)
	: (3A/30 VDC)
Ambient operation	Temperature : -10 °C to 60 °C
	Humidity : 85 % RH
Ambient storage	Temperature : -20 °C to 80 °C
	Humidity : 85 % RH
Installation	: Panel, Mounting
Material	: ABS-V0
Size	: 75 x 35 x 65 mm.
Weight	: 140 g.

## DIMENSION

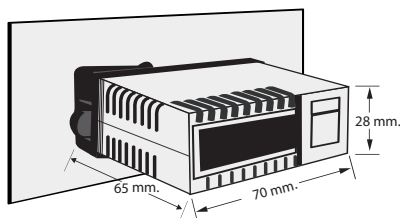
Unit: mm.(±0.5)



## CUTTING PANEL



## INSTALLATION



## Display Calculation Formula

Mode RPM

$$\text{Display value} = \frac{\text{Frequency (RPM) from measured}}{\text{Pulse value / Round from Setting value}}$$

Mode Line Speed

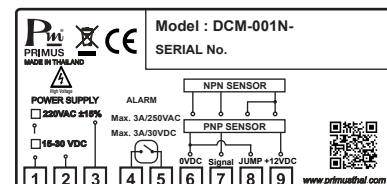
Frpm = Frequency (RPM) from measured.

P = Pulse value / Round

L = Distance / Round (Centimeter)

$$\text{Display value} = \frac{\text{Frpm} \times \text{L}}{\text{P}}$$

## WIRING DIAGRAM



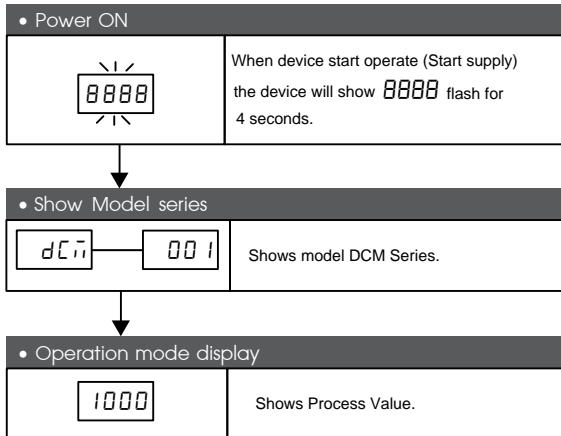
- Make sure the correct wiring connection before turning on electricity. Mis-wiring may cause malfunction of the unit and fire.
- Never modify the unit to prevent damage or incident such as malfunction and fire etc.

## ORDERING CODE

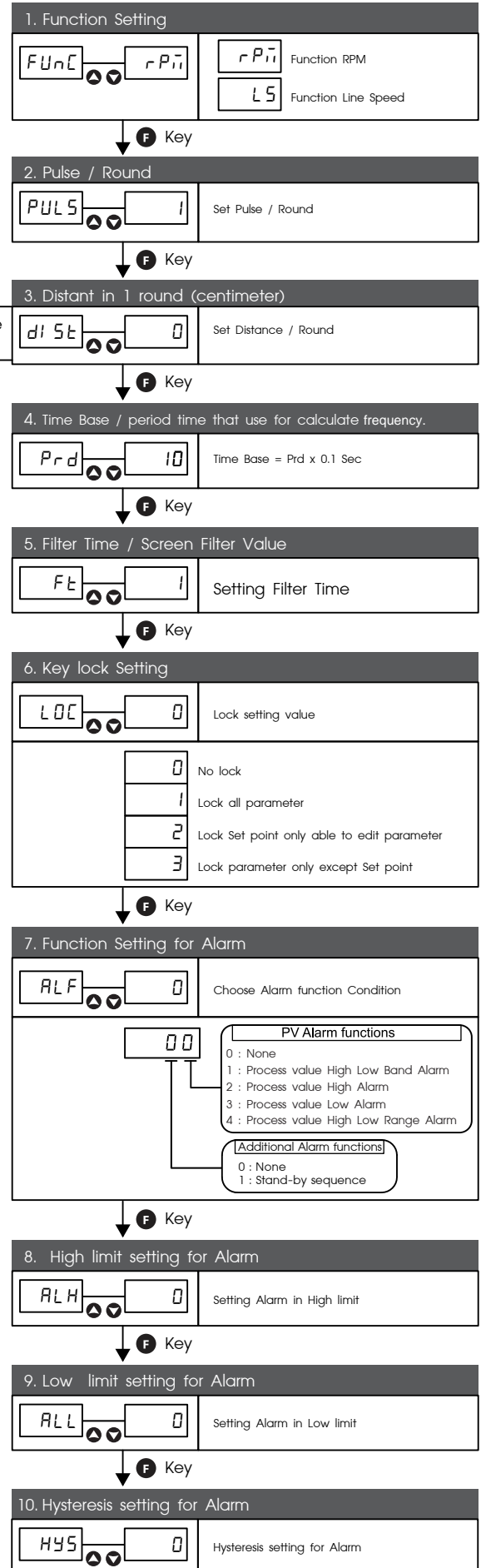
DCM-001N -

024	Supply 15-30 VDC
220	Supply 220 VAC ±15%

**OPERATION SETTING**



Press **F** key more than 2 seconds



**บริษัท โพรมัส จำกัด**  
 119 ซ.สีม่วงอนุสรณ์ ถ.สุทธิสารวินิจฉัย แขวงดินแดง  
 เขตดินแดง กรุงเทพฯ 10400  
 โทร 0-2693-7005, 0-2277-8027 แฟกซ์ 0-2277-3565  
 E-mail : sales@primusthai.com