



CMA-009

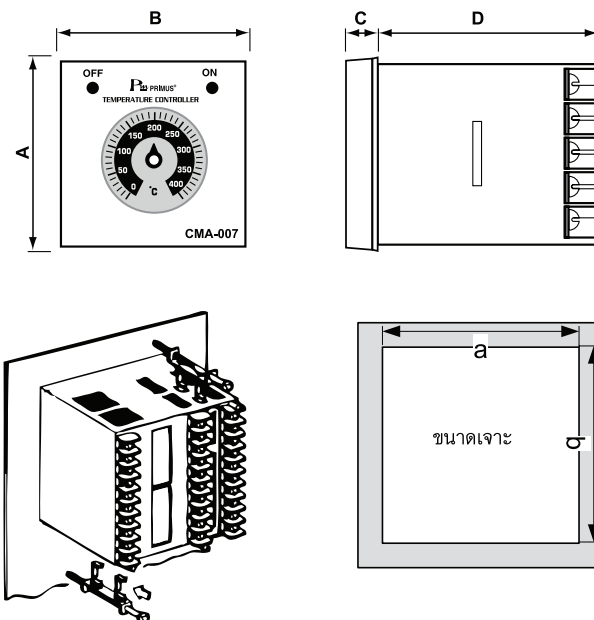
CMA-007

CMA-010

TECHNICAL SPECIFICATION

		CMA-010	CMA-007	CMA-009
Power Supply		220 VAC \pm 20% 50/60 Hz		
Power Consumption		2VA		
Display		Red = Relay OFF		
		Green = Relay ON		
Input	Input Type	Thermocouple K		
	Range	0-200°C, 0-400°C	0-400°C	0-400°C
	Accuracy	\pm 0.5%		
	Impedance	10M Ohm		
Output	Relay Contact	1 Alarm (5A/250VAC)		
Ambient Operation	Temperature	-10 °C to 60 °C		
	Humidity	85% RH Non-Condensing		
Ambient Storage	Temperature	-20 °C to 80 °C		
	Humidity	85% RH Non-Condensing		
Protection Degree	Front Protection Rating	IP41		
	Case Protection Rating	IP30		
Size		48x48x80 mm	72x72x80 mm	96x96x80 mm
Weight		340 g.	285 g.	235 g.

DIMENSION



Model	A	B	C	D	a	b
CMA-010	48 mm.	48 mm.	8 mm.	80 mm.	45 mm.	45 mm.
CMA-007	72 mm.	72 mm.	11 mm.	80 mm.	68 mm.	68 mm.
CMA-009	96 mm.	96 mm.	11 mm.	80 mm.	92 mm.	92 mm.

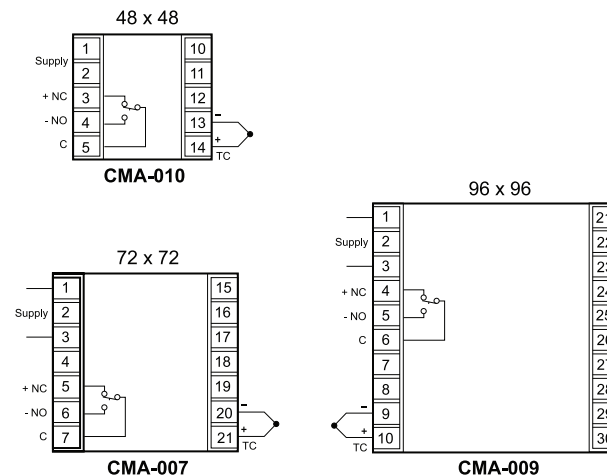
DESCRIPTION

- Analog Temperature Controller (Dial Type)
- Receive Input from Thermocouple Type K
- Temperature range 0-200°C and 400°C
- Relay Contact Output 5A, 250 VAC
- ON/OFF Control

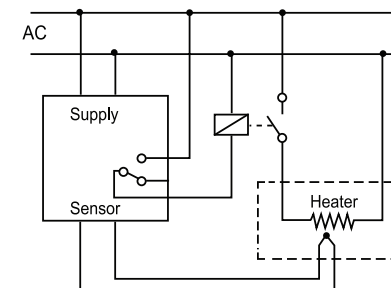
OPERATION

Analog Temperature Control (Dial Type) can control temperature of the systems to precision and correct by compensator for compensate the temperature of the systems that change and LED show when Output operate.

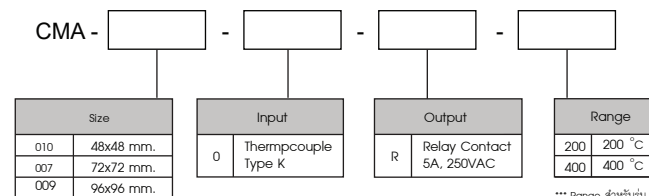
WIRING DIAGRAM



Wiring Diagram



ORDERING CODE



*** Range สำหรับรุ่น CMA-010 ให้ระบุขั้วต่ออุณหภูมิ



บริษัท ไพรมัส จำกัด
119 ซ.สีม่วงอนุสรณ์ ๑.สุขุมวิทจรัญ แขวงดินแดง เขตดินแดง กรุงเทพฯ 10400
โทร 0-2893-7005, 0-2277-6027 แฟกซ์ 0-2277-3565
E-mail : sales@primusthai.com