

DESCRIPTION

- KM-06N is a device that measures kW, total kW, MD, kWh, VL-L, VL-N, A, A AVG, PF
- 7-Segment display, 0.56 ; 5 digits, 3 rows
- PT Ratio and CT Ratio can be set from the program.
- LED status indicator and power unit.
- Can be recorded to computer via RS-485 MODBUS RTU

OPERATION

When starting KM - 06N, the Kilowatt Hour (kWh) or at the press of a button The kWh display uses the 7-Segment 2 and 3 segments together to show the kWh value. See Figure 1.

TECHNICAL SPECIFICATION

Power Supply		230 VAC ±15 % 50-60 Hz
Power Consumption		2.5 VA
Display		7-Segment, Size 0.56 Inch 5 Digit, 3 Rows
Input	Type	Voltage (TRUE RMS)
	Direct Phase and Neutral	21 to 288 VAC
	Direct Between Phases	37 to 500 VAC
	Primary Voltage	Up to 48,000 VAC
	Secondary Voltage	100,110,173,190, 240 VAC
	PT Ratio	1-200
	Accuracy	0.5 % (FS)
	Type	Current (TRUE RMS)
	Direct	20 mA to 5.00 A
	Primary Current	Up to 5,000 A
	Secondary Current	20 mA to 5.00 A
	Accuracy	0.5 % (FS)
	Type	Power
	Accuracy	± 1.0 % (FS)
	Type	Frequency
	Accuracy	45 to 65 Hz ±0.1 Hz
Energy	0.000 to 99, 999 , 999.0 MWh	
Active Energy Accuracy	IEC 61036 Class 1	
Type	MD Period	
Fix	15 Minute	
Communication	Protocol	MODBUS RTU
	Baud Rate	1200, 2400, 4800, 9600, 19200 bps
	Parity	None
	Stop Bits	1
	Data Bits	8 Bits
	Support Device Node	128
Ambient Operation	Temperature	-10 °C to 60 °C
	Humidity	85 % RH Non-Condensing
Ambient Storage	Temperature	-20 °C to 80 °C
	Humidity	85 % RH Non-Condensing
Protection Degree	Front Protection Rating	IP52
	Case Protection Rating	IP30
Installation	Panel, Mounting	
Material	ABS-V0	
Size	96 x 96 x 76.6 mm.	
Weight	355 g.	

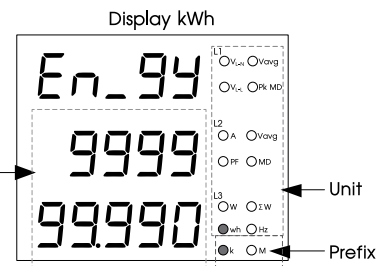
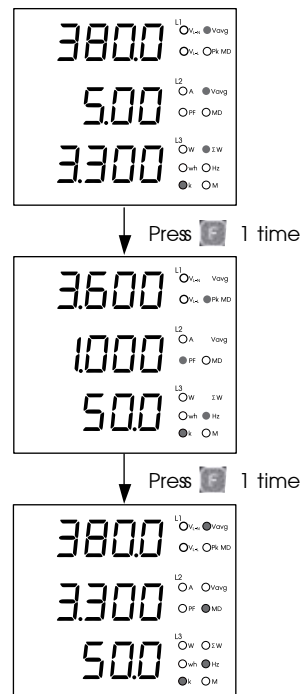


Fig. 1 Display kWh

The display of the decimal point and the prefix (Kilo, Mega) of KM-06N corresponds to the CTr x PTR

CTr * PTR	Display Energy
1 - 9	0.000 to 999,999,999 kilo
10 - 99	00.00 to 9,999,999.99 kilo
100 - 999	000.0 to 99,999,999.9 kilo
1,000 - 9,999	0000 to 999,999,999 kilo
10,000 - 99,999	00.00 to 9,999,999.99 Mega
100,000 - 200,000	000.0 to 99,999,999.0 Mega

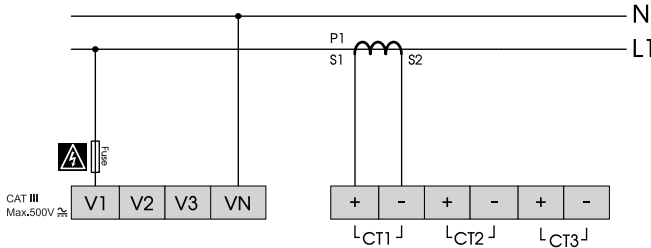
verage Value and Demand are displayed by pressing button The average value



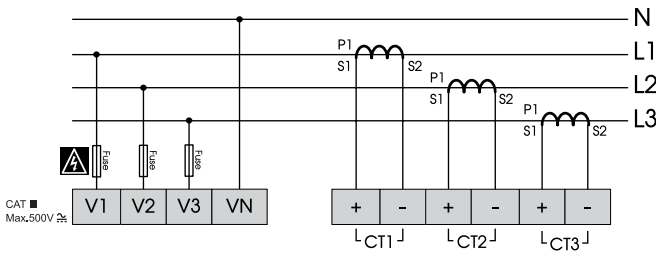
WIRING DIAGRAM

The circuit of KM-06N can be connected according to the diagram below. When the current transformer (CT) was removed short-circuit on the secondary side of CT should be maintained to prevent CT damage.

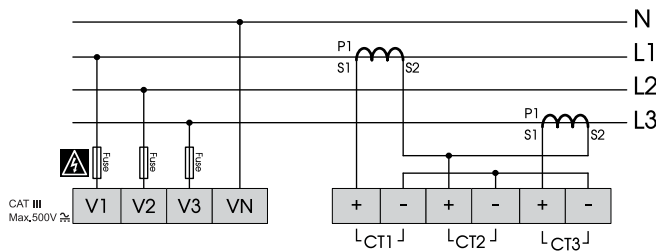
1/2 WIRES WITH 1 CT



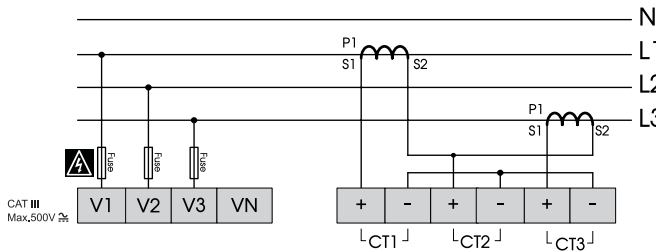
3/4 WIRES WITH 3 CTs



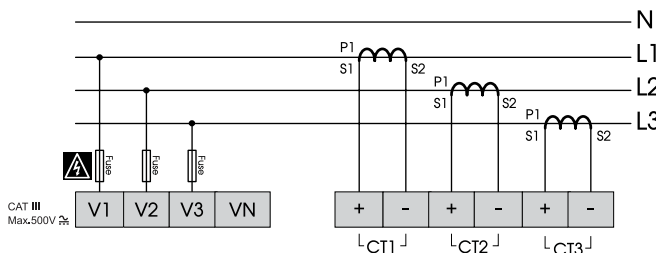
3/4 WIRES WITH 2 CTs



3/3 WIRES WITH 2 CTs

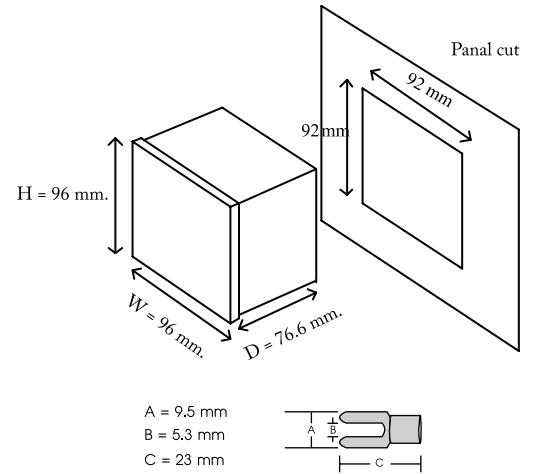


3/3 WIRES WITH 3 CTs



* Recommend ① Fuse 0.5 A

DIMENSION



ORDERING CODE

KM-06N

WARNING

- Make sure the correct wiring connection before turning on electricity. Mis-wiring may cause malfunction of the unit and fire.
- Never modify the unit to prevent damage or incident such as malfunction and fire etc.