

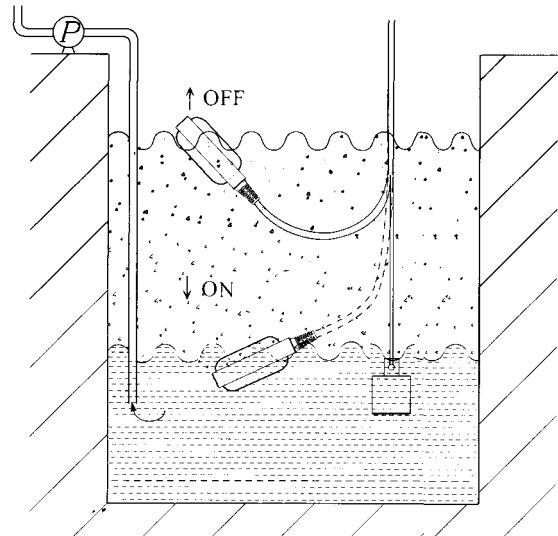


**DESCRIPTION**

CP-01 is a float switch for water level detection and control for high/low water level as needed. It's typically used in tanks, round and wastewater treatment facilities. The float switch has mercury switch inside and connect to the power cord. Attach the power cord to the top of the tank. When the water level is higher. The float is horizontal. Then the switch in the OFF position, but if the water level is low, the float will be in the vertical position. Make the switch ON

Due to the use of mercury switches, the lifetime is more than 500,000 times. NO+NC contacts can be used to drain water and add water. Use rubber cable to immerse in water

**WIRING DIAGRAM**



- NO+NC contacts are ON and OFF 15 degrees apart.
- Single contact NO or NC will have ON and OFF points 30 degrees apart. Make the high-low level wider

**ORDERING CODE**

CP-01-  -  M

Contact Type	
NONE	NO+NC
1	NO
2	NC

Cable Length	
1 M	1 M
2 M	2 M
3 M	3 M
5 M	5 M
10 M	10 M
15 M	15 M
20 M	20 M

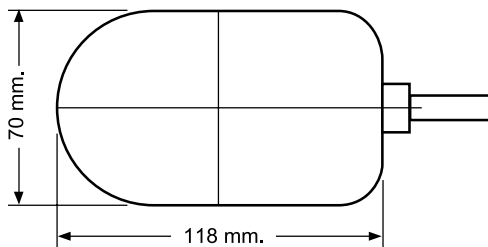
Additional length can be specified

**TECHNICAL SPECIFICATION**

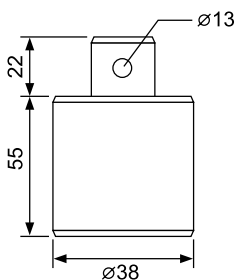
Model	CP-01	
Output	1 Relay Output	SPDT 5A/230VAC
Cable Length	1, 3, 5, 10, 15, 20 M	
Ambient operation	Temperature	0 °C to 100 °C
	Humidity	85 % RH Non-Condensing
Ambient storage	Temperature	-20 °C to 80 °C
	Humidity	85 % RH Non-Condensing
Protection Degree	Case Protection rating	IP68
Material	Rubber cable (3x1m <sup>2</sup> )	
	Stainless SUS304	
Size	70x118mm.	
Weight	132.2g.	

**DIMENSION**

**Cable Float CP-01**



**Weight CP-02**



Accessory CP-02 Weighted